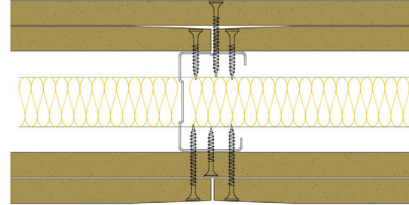


## 50-B-57(25) - SPEEDLINE System Data Sheet - Version V1 (24-10-23)

SPEEDLINE 50mm 'C' Stud Partition @600mm Ctrs,  
with 2x BG Gyproc 12.5mm WallBoard each side,  
25mm APR



### System Performance Breakdown

Fire Resistance:

BS476 Part 22:1987:

Test Ref & Date or Applied Ref & Report:

Max Height:

Thickness:

Duty Grade: BS 5234: Part 2:1992:

Sound Insulation:

**60/60 Minutes** (Integrity/Insulation).

**BTC 17580F - BRE Report P102396-1011A**

**Refer to Speedline Specification Clause**

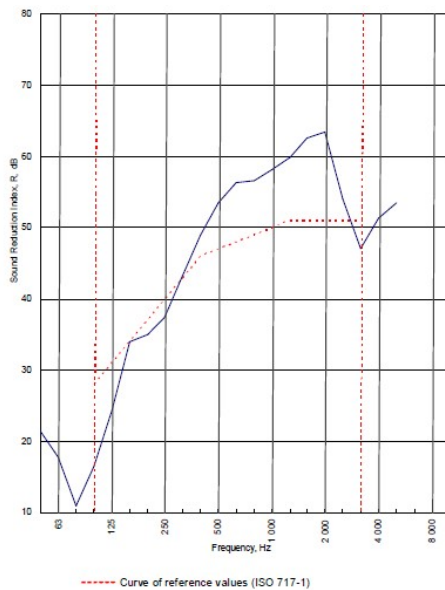
**102 mm.** (At Base Track, Excluding Finishes)

**Severe - Annexes A-F**

**47  $R_w$ dB**, Date Tested or Assessed Against - 11/07/2011

Test Code:  
**H17473AA**  
Test Date:  
**11/07/2011**

Freq. Hz	R dB
50	21.5
63	17.7
80	10.9
100	16.4
125	24.3
160	33.9
200	34.9
250	37.4
315	43.2
400	48.9
500	53.4
630	56.3
800	56.6
1 000	58.1
1 250	59.8
1 600	62.5
2 000	63.4
2 500	54.0
3 150	47.0
4 000	51.3
5 000	53.5
6 300	
8 000	
10 000	



Rating according to BS EN ISO 717-1:1997  **$R_w$  (C;Ctr) = 47 (-4;-12) dB**  
Max dev. 11.6 dB at 100 Hz

Evaluation based on laboratory measurement results obtained by an engineering method:	$C_{50-250} = -7$ dB	$C_{50-500} = -6$ dB	$C_{100-600} = -3$ dB
	$C_{50-315} = -17$ dB	$C_{50-630} = -17$ dB	$C_{50-800} = -12$ dB

TESTED AT ONE OF THE UKAS ACCREDITED LABORATORIES BELOW

B.T.C (H-Ref on Graph)	
B.R.E	
AIRO	
S.R.L	

Customer: Metsec plc Hepsac Division

BTC 17473A: Page 9 of 11

